



## Weekly Newsletter

w/b **SUNDAY FEBRUARY 6th 2022**  
**4th Sunday before Lent**

Dear Friends,

This Sunday sees us consider the story of Jesus healing Simon's mother-in-law. A small detail in the overall gospel story, but a significant act so early in the story. What did she think had happened? It is true that sometimes we can receive healing (most often in our spirits and emotions) without understanding how. Our faith is a puzzle in many ways, and to learn to receive gracefully and be thankful is often enough – these come not from head knowledge, but open hearts.

**The Vicar**

### WHAT'S COMING UP?

#### **THIS WEEK**

#### **Sunday 6<sup>th</sup> February – 4<sup>th</sup> Sunday before Lent**

- 9.30am – Morning Prayer at St Stephen's – led by Howard Bluett
- 10.00am – Holy Communion at St Martin's, in church and live streamed
- 6.30pm – Evening Prayer at St Martin's, in church and live streamed

#### **Tuesday 8<sup>th</sup> February**

- 4.00pm - Centering Prayer Session 4

#### **Wednesday 9<sup>th</sup> February**

- 10.00am – Holy Communion

#### **NEXT WEEK**

#### **Sunday 13<sup>th</sup> February – 3<sup>rd</sup> Sunday before lent**

- 8.30am - Holy Communion at St Martin's
- 9.30am – Holy Communion at St Stephen's
- 10.00am – Choral Matins at St Martin's, in church and live Streamed
- 3.00pm - Beacon Tea in Church
- 6.30pm – Second Thoughts at St Martin's, in church and live streamed

## **Beacon Tea**

These are on the second Sunday of each month (unless otherwise notified) in Church, 3.00 p.m. – 5.00 p.m. All welcome for sandwiches, cake and a chat. This month's is this Sunday (13<sup>th</sup>), then 13 March and 10 April. Beacon Teas are followed on the same Sundays by **Second Thoughts** at 6.30 p.m. Tea, coffee and cake will therefore be available beforehand to anyone coming to this event.

**Mary Gilbert and Elaine Snook**

## **Second Thoughts Today**

**Speaker: Howard Bluett**

Howard will ask "Can it ever be right to refer to God as "she" and to call God mother".

*The Femininity of God was proclaimed by women who felt the need to counter the overbearing patriarchy of the Christian church which denied them the opportunity of ordination. The idea that God was not a man and not Our Father was difficult to take on board after a lifetime of seeing pictures of God as a man and addressing God as Father, both of which habits begin in early infancy, and are followed by ideas of God the Creator (masculine noun) of all things from the beginning, who became visible as the perfectly male Jesus.*

Tea and cake will be served from 6pm

## **OUR NEXT RECITAL IS COMING UP SOON ON Saturday 12 February 4.30pm**

Don't miss the opportunity to hear the highly talented violinist Emmanuel Bach play an exciting programme of Austrian and Russian music accompanied by pianist Alexander Waduva.

Schubert Sonata in A major, 'Grand Duo', D. 574, Op. post. 162

Prokofiev Sonata No.2 in D major, Op.94b

Tchaikovsky Valse-Scherzo, Op.34

**Talk by Peter Brathwaite at St Martin's,  
Saturday 5 March 2 pm**

## **THE BRATHWAITE MEMORIAL – A PERSONAL REFLECTION**



*Peter Brathwaite, acclaimed baritone, based in the UK but performing internationally, also writes and presents for BBC Radio 3 and is working with Getty Publications on his first book. His solo exhibition 'Visible Skin: Rediscovering the Renaissance through Black Portraiture' is running on King's College London's Strand Campus until February 2022. Peter was a chorister at St Ann's Church in Manchester, received a music bursary to Bury Grammar School, and studied Philosophy and Fine Art at Newcastle University before receiving a scholarship at the Royal College of Music.*

Among the memorials at St Martin's is one that commemorates John Brathwaite, who was born in Barbados in 1722 and died on 21 September 1800. He is buried in a vault beneath the church.

John Brathwaite was the owner of four plantations in Barbados growing sugar cane using enslaved labour. He also served in London for 15 years as colonial agent for Barbados – a role in which he represented to Parliament the interests of the Barbadian plantation owners, merchants and traders. In 1788 he argued to Parliament for the continuation of the slave trade, in opposition to those – such as William Wilberforce MP – who were campaigning for its abolition.

John Brathwaite lived in Epsom with his unmarried niece Mary Ashley. She was one of the beneficiaries and executors of his will and commissioned the memorial. After his death, until she died in 1845 in her 90<sup>th</sup> year, she continued to live in the house they had occupied together, known since that time as Ashley House, which in turn led to the naming of Ashley Road and the Ashley Centre.

Peter Brathwaite is a descendant of John Brathwaite's nephew Miles. Peter's 4x great grandmother Margaret Brathwaite was born in Barbados in 1790, the illegitimate daughter of Miles, a prominent white enslaver, and an unknown enslaved African mother. Her husband, Peter's 4x great grandfather Addo Brathwaite, was the property of John Brathwaite.

Peter's talk will be a personal reflection on what enslavement has meant to him and his family.

## **Background Information**

This talk is an opportunity for us to listen to someone who has a personal connection with the memorial.

It is part of ongoing reflection being undertaken by the Parochial Church Council of St Martin's in the light of guidance offered by the Church Buildings Council and the Cathedrals Fabric Commission in their discussion document *Contested Heritage in Cathedrals and Churches*.

It is hoped that such reflection will help the church family of St Martin's, and those who visit our church building, to engage sensitively with the consequences of past enslavement, to reflect on the repercussions still being experienced today, to consider how we might provide context to such memorials in our church, including how to commemorate the names of those enslaved, how we might formally lament the atrocities of past and modern slavery, and how we might reach out to those who previously felt unwelcome in our church because of the existence of such memorials.

In connection with this reflection, the PCC is helping to fund a research project which will give us a sense of the man John Brathwaite, through records held at The National Archives and elsewhere. The research will also help us to understand the local context of the time, in our home town Epsom, so that we may better understand the whole story that the monument is revealing to us. This is in collaboration with the Diocese of Guildford who are funding similar research elsewhere in Surrey.

Our church (its building and its garden) is a sacred space where we come to worship God in his presence and in fellowship with each other, in all seasons – in times of joy and in times of sorrow. It is a place of peace and spiritual refreshment. All are welcome.

## **The Kingston University 'Big Read'**

I have copies of the 2020 book that the university encouraged all its members to read. The scheme works by everyone reading the book, and then joining a group to discuss it. The book was 'Airhead' by Emily Maitlis. It's an account of some of her assignments abroad in recent years. Copies are available in Church – just help yourself. I will arrange an opportunity to get together to discuss the book, if they wish, at the beginning of Lent.

## **STEWARDSHIP**

### **Giving to St Martin's and St Stephen on the Downs**

For general and stewardship giving you can give online giving via the Charities Aid Foundation. Donations can be either a one-off donation or a regular donation using direct debit. To make a donation either:



1. Click on the following link:

<https://cafdonate.cafonline.org/13377>

OR

2. Use your Smart Phone and Scan the QR Code below

There is also a "Donate" button on our website.

### **Cheques to St Martin's**

If giving a cheque donation to St Martin's Church, please can it be payable to: 'The PCC of the Ecclesiastical Parish of Epsom'

### **Donation Station**

If you wish to give via contactless payment, please use the donation station in church. You can give a pre-set amount or choose one. You can also gift aid your donation.

## **OTHER NOTICES**

### **OUTDOOR AREA FOR ARK @ST MARTINS**

We are creating an outdoor area, at the Vicarage, for use by the Ark children. The purpose is so that children can connect with creation and the creator. There will be a mud kitchen, den making area and prayer space. Can you help provide any of the following equipment (preferably second hand / recycled):

1. Mud kitchen – sink, work top / preparation area, storage, pieces of timber 2"x1" or 2"x2", drawer knobs to be used as dials on a pretend cooker
2. Kitchen utensils – small sauce / frying pans, rolling pin, fish slice, serving spoons, forks, baking tins
3. Dens – 1" thick rope, old tents for making dens

Thanks to those who have already donated items, it's coming along!

Please speak to me if you can help in any way.

**Yvonne Parish**

## MISSION FOR THE MONTH - February

### HOME MISSION

**Epsom and Ewell Foodbank** - opened in 2012 and fed more than 2,600 in 2017 and the need has been escalating ever since. Especially in the last 2 years

They are also working to stop hunger in our area working together with the Community, Churches, Agencies, Businesses and Schools

**The Street Pastors** - The Church in action on the street. Caring-Listening-Helping. They are volunteers from local Churches, who care about their Communities with Practical and Spiritual Patrols.

Please take a look at the Missions Board at the back of church and hold them in your Prayers

***Jill Chapman***

### ABROAD MISSION

#### **Wheels for the World**

Wheels for the world meets the practical needs of the disabled person with a wheelchair and as they are a Christian charity, they offer a Bible in their own language and local people share the Christian message.

Wheelchairs are given according to need regardless of whether the recipient has a faith or not. *Wheels for the World* are under the umbrella of Through the Roof

***Meg Topley***

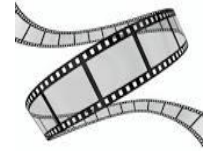
#### **FILM AND CAKE**

You are invited to join us for an afternoon of film and homemade cake on **Saturday 19<sup>th</sup> February 2022**, in Church House, from 4.30 pm. The film will begin around 5.00 pm. We have chosen 4 films, all of which are family friendly, for you to choose from.

They are:

- **Paddington** – the story of this much-loved bear is brought to life in this film, starring Hugh Bonneville and Julie Walters
- **Goodnight Mr Tom** – the aggressive behaviour of an aging man changes drastically in the company of a young evacuee from London. This is a lovely story with a happy ending, starring John Thaw
- **Bugsy Malone** – spoof of an old gangster movie based around Prohibition. The cast is made up entirely of children and stars Jodie Foster

- **Monsieur Hulot's Holiday** – Monsieur Hulot travels to a beachside hotel for a vacation, where he accidentally (but good-naturedly) causes havoc. Although this is French film, you do not need to know French as there is no speaking. Stars Jacques Tati.



All four films last no longer than 1 hour 20 mins.

Come along with your friends and family for an enjoyable afternoon. Please sign up at the back of church or by email to [mary.hollowayneville@sky.com](mailto:mary.hollowayneville@sky.com) and pick the film that you would like to watch. Majority wins the day!

All relevant COVID restrictions will be in place.

**Events Team**

## **ST JOHNS STONELEIGH LENT COURSE 2022**

**Who do you think you are?**

**The story of the Church from the Book of Acts to the present day**

**Wednesdays 7 30 pm- 9.00pm  
In the Church**

**A fast moving presentation of Biblical and Spiritual issues in Church history**

**March 9th Foundation Stones-** Canons, Councils, Creeds and the Church Fathers

**March 16<sup>th</sup> Seeds of Hope** -The Medieval Church and the Road to Reformation

**March 23<sup>rd</sup> The Great Light-** Reformation and Revival

**Mar 30<sup>th</sup> Faith under Fire** -The Challenge of the Enlightenment

**April 6<sup>th</sup> Quo Vadis?** - The legacy of the 20th Century and issues facing the church today.

After a presentation (with visuals) in church there will be "**Coffee Plus**"- an opportunity for short informal group discussions with questions based on the episode of the day. The evenings will end with a short optional Q and A session. Lecture notes are provided

Please sign up via the parish office **020 8786 7048**

## **Eco Church**

'There are more 'eco' links on the church website, under 'Church Life' and 'Eco Church' - <https://www.stmartinsepsom.org/church-life/> . A very useful local group is Sustainable Epsom and Ewell - <https://www.sustainableepsomewell.co.uk> - who have information on many things (look under 'themes') including some more recycling options around Epsom. Do have a look - and then reduce, re-use, and RECYCLE!

### **Recycling at Epsom Methodist Church**

There is a recycling box in the welcome area at the Methodist Church in Ashley Road. They recycle the following and support the linked charities:-

- Used stamps (RNIB)
- Gently used bras ('Smalls for All' supporting vulnerable women)
- Spectacles – without the cases, please - (sent to developing countries)
- Crisp packets (Air Ambulance)
- Batteries, empty tablet blister packets (recycled so they are not sent to landfill)

In addition the Co-op take plastic bags. Other shops collect other things, no doubt ... We could add to this list.

In due course, perhaps, St Martin's could collect something for recycling too  
There are more 'eco' links on the church website, under 'Church Life' and 'Eco Church' - <https://www.stmartinsepsom.org/church-life/> .

A very useful local group is Sustainable Epsom and Ewell  
- <https://www.sustainableepsomewell.co.uk> - who have information on many things (look under 'themes') including some more recycling options around Epsom. Do have a look - and then reduce, re-use, and RECYCLE!



## **PCC Governor vacancy – Volunteer role.**

There is a vacancy for a PCC appointed Foundation Governor at St Martin's Church of England Voluntary Aided Schools, Epsom. Foundation Governors in a Church school play a vital role in ensuring that the Christian character and ethos of the school is promoted and maintained.

As well as commitment to seeking to support the maintenance of the Christian ethos, St Martin's is hoping to recruit an individual with background which would support governor challenge and support related to change management. Applications are welcome from individuals who are willing to engage in relevant training to support their own development.

Being a Governor is really worthwhile and rewarding, and if you are interested in this role, please do get in touch with:



Nick Parish on [vicar@stmartinsepsom.org](mailto:vicar@stmartinsepsom.org)  
Robert Burns on [rburns@stmartinsepsom.school](mailto:rburns@stmartinsepsom.school)  
and copy your email to the Clerk to the Governors  
[clerk@stmartinsepsom.school](mailto:clerk@stmartinsepsom.school) ).

Applicants will be asked to complete an application form including a skills audit to support the appointment of the skills and experience needed by the school to support effective governance.

### **CONTACT US**

#### ***Parish Office:***

***Church House, Church Street, Epsom,  
KT17 4PX Phone: 01372 722567  
E-mail: [stmartinsepsom@btconnect.com](mailto:stmartinsepsom@btconnect.com)  
Website: [www.stmartinsepsom.org](http://www.stmartinsepsom.org)***

**Opening hours are Mondays, Wednesday, Thursdays & Fridays  
9.30am to 12.30pm**

## **LATEST MESSAGE FROM FOOD BANK**

### **NEEDED**

Tinned meat pies

Long-life sponge puddings

Powdered milk

Tinned potatoes,

Instant mash

Squash for diluting

Washing powder, pods, tablets (bio and non-bio)

Brown sauce

Chocolate spread

Adult toothbrushes, Female and male deodorant,

Children's toothpaste 0-2 & 6+

Tea bags

Pasta sauce

Cereal (no porridge or bran as we have lots)

Long-life fruit juice

Dog food (wet and dry please)

Spaghetti in sauce

Dried pasta in sauce

Sugar (500g bags)

Peanut butter

Hair conditioner

Adult toothpaste

Tampons

You can donate at the usual supermarket points, or bring donations to our car park;

Epsom & Ewell Foodbank Generation Resource Centre

(Behind West Ewell Primary School) Ruxley Lane Ewell, KT19 0JG

Normal donation drop off times: Monday to Friday 9am – 2pm.

## **CONTACT US**

### ***Parish Office:***

***Church House, Church Street, Epsom,***

***KT17 4PX Phone: 01372 722567***

***E-mail: [stmartinsepsom@btconnect.com](mailto:stmartinsepsom@btconnect.com)***

***Website: [www.stmartinsepsom.org](http://www.stmartinsepsom.org)***

**Opening hours are Mondays, Wednesday, Thursdays & Fridays  
9.30am to 12.30pm**

# Music@StMartin's

## SPRING RECITALS 2022



EPSOM  
COLLEGE

**MUSIC SCHOLARS' CONCERT**  
SAT 15 JAN AT 4.30PM



**EMMANUEL BACH - VIOLIN**  
SAT 12 FEB AT 4.30PM



**IAIN MACFARLANE - ORGAN**  
SAT 12 MARCH AT 4.30PM



**THE RICE FAMILY TRIO**  
SAT 9 APRIL AT 4.30PM

[www.stmartinsepsom.org](http://www.stmartinsepsom.org)  
ST MARTIN'S CHURCH, EPSOM KT17 4PX  
Registered Charity No 1134149  
Admission by donation