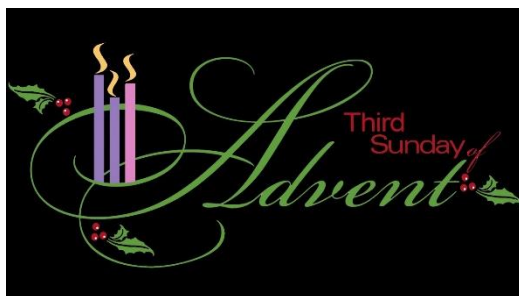


**Registered Charity Number: 1134149**

## WEEKLY NEWSLETTER

**SUNDAY 11<sup>th</sup> DECEMBER 2022 –  
ADVENT 3**



John the Baptist was bold, brash, a passionate believer that Jesus was the Messiah and prepared to speak truth to power. Yet we hear this week how, whilst in prison, he sent someone to ask Jesus, 'are you the one who is to come?' Given his circumstances such questioning is understandable. Don't we all have low moments when we question what we are doing with our lives? 'Have I sacrificed myself for a lie?' Jesus' response was to point to the evidence – an exercise we might well undertake as our observance of the season.

## **THIS SUNDAY 11<sup>th</sup> December – Advent 3**

- 9.30am**      **Holy Communion at St Stephen's**  
**10.00am**      **Sung Morning Prayer at St Martin's – in church  
and live streamed**  
**3.00pm**      **Beacon Tea – carols and cakes**  
**6.30pm**      **Second Thoughts - Martyn Holloway-Neville**  
(Refreshments available beforehand).

*'Solidarity – the start of the fall of the Iron Curtain.'*  
Solidarity (in its native Polish, Solidarność) was formed in 1980 as a trade union for the shipyard workers of Gdansk. It became a shining light behind the Iron Curtain of the Cold War and started its demise. Martyn planned to head for Gdansk in late July 2020 for the European Scout Jamboree but that was called-off because of the pandemic. He will share with you a remarkable tale of danger, spirit and hope.

'I have been a member of this congregation for many years, and therefore do not need to say any more on that front! In the Scouting world, my trip to Poland will be my fourth international adventure – following excursions to Essex (it still counts!), Sweden and Iceland in years gone by'.

**Beacon Tea \* Note different start times\***

**3.00 p.m.\*- 5.00 p.m.**

We shall provide sandwiches and cakes and have Christmas carols round the piano. We look forward to welcoming you.

***Mary Gilbert and Elaine Snook***

## Evening of Lights – 12<sup>th</sup> and 13<sup>th</sup> December

You are invited to come to one of the Evening of Lights when St Martin's will be lit with candles and the Christmas tree lights.



These evenings offer a quiet space for remembering people close to you, and the opportunity to light a candle in their memory. We hope to be able to offer you a hot drink (tea, coffee or hot chocolate) before you leave.

The dates are:

Monday 12<sup>th</sup> December

6.00 p.m. – 8.00 p.m.

Tuesday 13<sup>th</sup> December

6.00 p.m. – 8.00 p.m.

There will also be an Evening of Lights at St Stephen's, Langley Vale, on Wednesday 14<sup>th</sup> December 6.00 p.m. – 8.00 p.m.

***Mary Gilbert and Elaine Snook***

**Wednesday 14<sup>th</sup> December**

**10.00am Holy Communion**

**NEXT SUNDAY 18<sup>th</sup> December – Advent**

**9.30am Morning Prayer at St Stephen's**

**10.00am Sung Communion at St Martin's – in church and live streamed**

**6.30pm Festival of 9 Lessons and Carols**

**Wednesday 21<sup>st</sup> December**

**10.00am Holy Communion**

## **Wear your Christmas Jumper this Sunday!**

Christmas Jumper Day, launched in aid of Save the Children 10 years ago, is now a fixture in early December so, as in previous years, we invite you to wear your Christmas jumper to church this Sunday. To donate to this excellent charity go to

<https://www.savethechildren.org.uk/>

***Sarah Lutton***

## **FUNERAL SERVICE FOR ROSIE HALL**

This will take place on Friday, January 6<sup>th</sup> at 2.30pm at St Martin's, followed by a reception in the Church Hall. The family invite members of the congregation to join them.

## **Advent Book**

I have a signed (!! ) copy of the Archbishop of York's Advent book, 'Sleepers Wake' by Nicholas Holtam. Would anyone like to read it?! There's still time to catch up before Christmas is upon us!

Contact the church office if interested.

***Helen Williams***

## **Warm Hubs in Surrey**

The days are getting chilly! Please find a list of the Warm Hubs located locally:

## **Epsom and Ewell**

Epsom Methodist Church, Roots Community Café

Address: Cafe 77 Ashley Rd, Epsom, KT18 5AQ

Opening times: Wednesday from 9am to 6pm

### **Epsom Library**

Address: 6 Epsom Square, Epsom, KT19 8AG

Opening times:

Monday, Wednesday and Friday: 9.30am to 5.30pm

Tuesday and Thursday 9.30am to 7pm

Saturday: 9.30am to 5pm

### **Ewell Library**

Address: Bourne Hall, Spring Street, Ewell, KT17 1UF

Opening times: Monday to Friday from 9.30am to 5pm

### **Ruxley Church**

Address: Ruxley Lane, Ewell, Epsom KT19 0AF

Opening times: Thursday from 11.30am to 2.30pm

Please find some information on Surrey's additional Warm Hubs here:

[Warm hubs in Surrey - Surrey County Council \(surreycc.gov.uk\)](https://www.surreycc.gov.uk/warm-hubs)

The network of nearly 70 Warm Hubs are there to support residents who are affected by the cost of living and energy crisis.

### **Surrey bus services review**

Surrey are consulting about the future of bus services locally - if anyone wishes to respond here is the link:

<https://www.surreycc.gov.uk/roads-and-transport/policies-plans-consultations/roads-and-transport-consultations/future-bus-review>

## STEWARDSHIP

### Giving to St Martin's and St Stephen on the Downs

For general and stewardship giving you can give online via the Charities Aid Foundation. Donations can be either a one-off donation or a regular donation using direct debit. To make a donation either:

1. Click on the following link:

<https://cafdonate.cafonline.org/13377>

OR

2. Use your Smart Phone and Scan the QR Code below



There is also a "[Donate](#)" button on our website.



### Donation Station

If you wish to give via contactless payment, please use the donation station in church. You can give a pre-set amount or choose one. You can also gift aid your donation.

**FOODBANK NEEDS We urgently need:**

Tomato Ketchup,

Shaving foam

Anti Bacterial Wipes

Squash

Non Bio washing pods/powder

Non plastic baby wipes

We would also appreciate any bags for life/very strong bags/Christmas Bags for Life

Please, no more of these items:  
washing up liquid,  
pasta,  
pulses,  
non-dairy milk,  
peanut butter,  
baby wash.

## MISSION OF THE MONTH - December

### Home Mission The Church Army



The Church Army - activating positive change through Faith, Words, and Action. A Mission focused community within the Anglican Church, positively affecting lives. Prayerfully—Expectant— and Generous.

Please take a look at the Mission Board and hold them in your Prayers.

***Jill Chapman***

### Mission Abroad



Alex's Medical and Educational Clinic in Africa (AMECA).

Founded in 2006 by Ruth Markus,

in memory of her only child Alex. AMECA is committed to healthcare delivery, training healthcare professionals and to healthcare education in Malawi through sustainable initiatives. A maternity unit has been completed and in 2022 training undertaken by the key staff has led to more than 85% of all women being scanned during their first antenatal visit.

***Meg Topley***





## Epsom Rotary Christmas Collections

Santa is back and will be visiting Epsom again this Christmas! Epsom Rotary Club and Tilly the Train will be helping Santa collect money for local charities. If you have been good, Santa may have something for you in his sack! All children in the areas below will need to keep ears pinned back for Christmas carols and eyes open to see Tilly lit up like a Christmas tree. Just see whether Santa has a gift for you.



Santa will be knocking on doors on	
Monday 5th Dec.	Wells Estate
Tuesday 6th Dec.	College Ward
Wednesday 7th Dec.	Livingstone/Horton
Monday 12th Dec.	Langley Vale
Tuesday 13th Dec.	Hookfield
Monday 19th Dec.	Mospsey Crescent
Tuesday 20th Dec.	Woodcote

Santa will start his visits at 5.30 pm  
Watch him on his round at [sleightracker.co.uk](http://sleightracker.co.uk)

Epsom Rotary is collecting for local good causes in Epsom and Ewell and we'd be grateful for your support.

You can see who we help on our web site [epsomrotary.uk](http://epsomrotary.uk). Gifts can be made on-line or by text at any time, and by card or cash on the collection night.



If you are a wiz with your mobile then use the QR code to make a donation

Just go to [justgiving.com/campaign/tilly22](http://justgiving.com/campaign/tilly22) and give us a few pounds and we will help local charities to survive in these difficult times or Text TILLY to 70450 to donate £5



Texts will cost the donation amount plus one standard network rate message.

## **Sign up for Walk the Wey**

**and help the vulnerable and disadvantaged in our diocese**

### **Sponsored walk 7<sup>th</sup> January 2023**

Bishop Andrew and Bishop Jo are inviting you to Walk the Wey to Guildford to help the vulnerable and disadvantaged in our diocese. The last walk raised £4,300 for the Bishop of Guildford's Communities Fund, which provides funds for parish projects that help the disadvantaged and vulnerable. They would love your help this year so that the Fund can support more community projects.

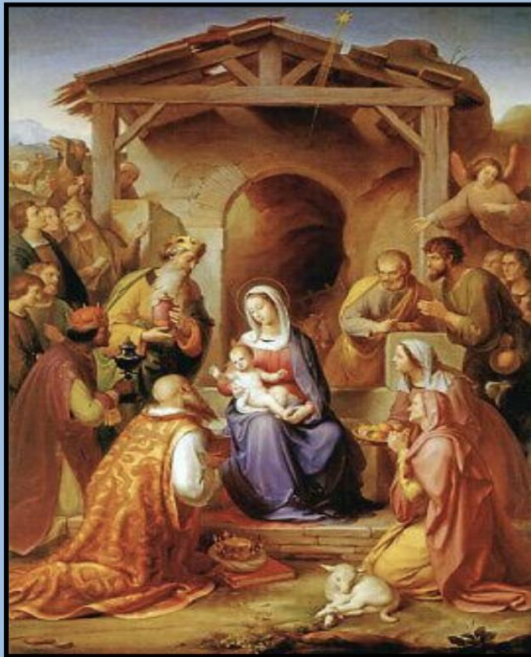
Bishop Andrew and Bishop Jo will be walking the Wey Navigation tow path on Saturday 7th January with walk options of 6 or 12 miles starting either in Godalming, West Byfleet or Send.

During the past year the Fund has provided funds to help, among others, St Martin's, Old Dean, Camberley launch a community breakfast scheme in an area of high deprivation, keep Andy's Café at St Andrew's, Goldworth Park serving the community while it recovered from lockdown and set up a support group for new mothers at St Mark's, Great Tattenhams.

To find out more about the walk and how to donate to the Fund please [click on this link](#). To register an interest in taking part contact [claire.isherwood@cofeguildford.org.uk](mailto:claire.isherwood@cofeguildford.org.uk) giving your name, parish, mobile number and likely starting point.

St Martin of Tours, Epsom  
with St Stephen-on-the-Downs

A FESTIVAL OF NINE LESSONS  
AND CAROLS



*Geburt Christi* by Franz von Rohden, 1853

Music by Stopford, Wood, Praetorius, Rutter, Halley and Ledger

Sunday, 18 December 2022  
6.30pm

**Submitting an item for the newsletter:**

**Please ensure that all items are emailed to the office by close of play on Wednesday, to be included in the newsletter for that week. Thank you.**

***Parish Office:***

***Church House, Church Street, Epsom,  
KT17 4PX Phone: 01372 722567  
E-mail: [office@stmartinsepsom.org](mailto:office@stmartinsepsom.org)  
Website: [www.stmartinsepsom.org](http://www.stmartinsepsom.org)***

**The Parish Office is open Mondays, Wednesdays, Thursdays and Fridays, 9.30am to 12.30pm.**

**Please contact clergy and lay ministers via the office.**