

St Martin of Tours

Epsom

St Stephen on the Downs

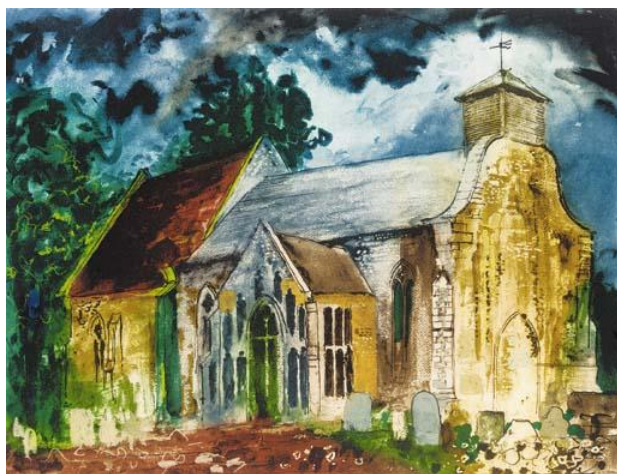
Langley Vale

Registered Charity Number: 1134149

WEEKLY NEWSLETTER

SUNDAY 14th JUNE 2026

TRINITY 2



Artwork by John Piper

DIARY

Sunday 14th June Trinity 2

- 8.30am Holy Communion service at St Martin's
9.30am Holy Communion service at St Stephen's
10.00am Choral Mattins service at St Martin's
6.30pm Second Thoughts at St Martin's
(refreshments from 5.45pm)

Rebecca Jaillot 'John Piper – School, Faith and the Artist's Eye'

John Piper was both at Epsom College and a member of the congregation at St Martin's. He was richly inspired by the Curate of the day, Dr Victor Kenna, to expand his interest in modern art. Rebecca will develop on all these aspects of John Piper's life. Rebecca has an extensive background in the Arts and Heritage sector. She began her career at Tate Britain, contributing to the launch of Tate Modern. After a decade at Leighton House Museum in Kensington, she joined The Foundling Museum dedicated to Britain's first home for abandoned babies and children. For the past nine years, Rebecca has served as the Archivist at Epsom College. Alongside this role, she is training as a psychotherapist, specialising in work with teenagers and young people.

Tuesday 16th June

4.00pm Take Time to Talk – How about Leviticus? (tea and biscuits from 3.45pm in church)

Many of us are quite unfamiliar with much of the Hebrew Scriptures. Today we will be exploring some of the important and interesting material in Leviticus 19. Do come and join us.

Lynne

Wednesday 17th June

10.00am Holy Communion service at St Martin's

Sunday 21st June Trinity 3

9.30am Morning Prayer service at St Stephen's

10.00am Holy Communion service at St Martin's

6.30pm Choral Evensong service at St Martin's

Marmalade

I will be selling marmalade, jam and lemon drizzle cakes after the 10am service on Sunday June 21st. All proceeds to the Christmas Fair.

Maureen

From Bishop Paul (acting Bishop of Guildford)

I write to extend an invitation to you. As you know, I have set three key priorities for the coming two years: prayer, pastoral care and a sharper focus on our 'priority of priorities': deepening discipleship (including revitalisation) and investing wholeheartedly in children and young people.

As part of this, I am holding special gatherings in each of our 12 deaneries to enable me to meet, pray and worship with our clergy and congregations as part of my pastoral care for the diocese.

I would be delighted if you would join me at the **Epsom Deanery Gathering which will be held at St Paul's Howell Hill on Monday 6 July from 7.30pm to 9pm, with tea and coffee served from 7pm.**

Although the past months have held deep sadness, my heart has also been lifted by the remarkable signs of God's grace I have witnessed across the diocese. Our time together will include thanksgiving, a celebration of what God is doing in each parish, prayer for the specific needs of your ministry and parish, worship

and a few reflections from me on what I sense God may be saying to us in this season. Finally, if you would like to join us but cannot make the date, you are most welcome to attend any of the other deanery gatherings, a list of which is below my email footer. I hope you can join us and very much look forward to seeing you. Every blessing,
+Paul

The Rt Revd Paul Davies

Bishop of Dorking & Acting Bishop of Guildford

Farnham Deanery at St Andrew's Farnham on Thursday 18 June

Cranleigh Deanery at St Nicolas Cranleigh on Monday 29 June

Woking Deanery at Christ Church Woking on Wednesday 1 July

Runnymede Deanery at St John's Egham on Sunday 5 July

Epsom Deanery at St Paul's Howell Hill on Monday 6 July

Emly Deanery at Holy Trinity Claygate on Tuesday 14 July

Godalming Deanery at Godalming Minster (St Peter and St Paul's) on Thursday 16 July

CONFIRMATION SERVICE

Bishop Paul is visiting us on **Sunday July 19th**. He's coming to dedicate our new solar panels, share in a parish tea and, at **5.30pm**, lead a service that will include first communion for some of our children and confirmation for young people and adults. If you have never been confirmed (or even baptised) and would like to make these public declarations of faith and discipleship, please let one of the clergy know.

Lost property

There's now quite a collection of scarves, hats, gloves, reading glasses, drinking vessels, etc. at the back of church. I plan to remove these this week and, where possible, they'll be donated to charity shops. So please check if anything among them belongs to you or someone you know. Thanks. **Sarah**

Community art showcase at The Horton Atrium Gallery

The organisers of the upcoming Horton Art Exhibition 2026 invited young people in Epsom & Ewell to submit artwork on the theme, Places and Spaces.

The exhibition will feature physical, chosen masterpieces ranging from drawings and paintings to collages, stitchings and sculptures, to celebrate how young people view and experience the places that are important to them in their local area.

Pleased to let you know that my submission, a painting of St Martin's, was selected to be part of the exhibition.

Friends and family are invited to come along to see the selected works on display.

Key event details:

- Exhibition Dates: Wednesday 17th June – Tuesday 30th June 2026.
- Opening Hours: Tuesday to Saturday, 9:15 AM – 4:30 PM (Closed Sundays and Mondays).
- Main Venue: Atrium Gallery inside The Horton Arts Centre, Haven Way, Epsom KT19 8NP.
- Admission Cost: Completely Free entry to the public.

Erin O

Parish Giving Scheme

If you are on our mailing list you will have received details of how effective and simple this scheme is. Making it simple to donate regularly by direct debit. If you haven't yet done it. Do follow this link to set up your regular giving:

[The Parish Giving Scheme Website](#)

Nature conservation and local government reform

We're all aware of the great efforts at St Martin's under the Eco Church initiative, but an army of volunteers is also working in the wider community to care for Epsom's extraordinarily rich green spaces and wildlife. This work now faces uncertain times due to the upheaval of local government reform.

The Epsom and Ewell Times, our local news website, has recently reported on the drive to ensure nature isn't forgotten when the borough is abolished next year. To read the article please click here: <https://epsomandewelltimes.com/epsom-and-ewell-countryside-volunteers-face-uncertain-times>

PRAYER GROUPS

Evening Prayer on Zoom, weekdays 5pm-5.30pm

This follows the Common Worship rite and is led by one of the regular members of the group.

See <https://www.churchofengland.org/prayer-and-worship/join-us-service-daily-prayer> All are warmly invited to join on an occasional or regular basis. Find us at:

<https://zoom.us/j/91650281049?pwd=dLiB4jY8FRRdtFcbGBRjaVtMJ9K2Ar.1> or, if you prefer typing details directly into Zoom, use Meeting ID is 916 5028 1049 and passcode 960460.

**Centering Prayer: Every other Tuesday, 4pm in Church
(Tea & biscuits from 3.45pm)**

“Be still and know that I am God” *Psalm 46:10*. A group meets to pray together in silence. We begin with something to reflect on - a biblical passage or Psalm. After our 20 minutes of silence, we share something that we have noticed during our time together.

**Contemplative Prayer: 1st Tuesday of each month, 11am
In the Lady Chapel, St Martin’s**

A time for focussing on God’s presence and allowing oneself to be filled with God’s grace. It’s a time of stillness and quietness. We listen to the words of God or of Jesus in contemplation. There is an additional zoom Contemplative Prayer session on the 3rd Thursday of each month at 8pm. Find us using the same Zoom details cited above for Evening Prayer.

PRAYING FOR OUR CHURCH AND OUR COMMUNITY

Please remember in your daily prayers this week:

Sunday 14th

Our Mission and Evangelism Team. Our Church Finances and Our Treasurer. Our MP Helen Maguire. Epsom and Ewell Borough Council: elected members and officers. Those in Hambledon Hill, Hambledon Vale, Harding Road and Hawthorne Place.

Monday 15th

Our Discipleship and Fellowship Team. Our Premises and Gardens Team. The Emergency Services: Fire, Police and Ambulance. Those in Headley Road, Heathcote Road, Hereford Close, High Street and Highridge Close.

Tuesday 16th

Our Choir, and our vision for a new Musical Director who will lead outreach into the community through the gift of music. The growth of our Life Groups, Study Groups, WhatsApp Groups. Our Missions: Operation Noah. Those in Hillcrest Road, Hook Road, Hylands Close, Hylands Road, Jackson Close and Kilcorral Close.

Wednesday 17th

Our Livestreaming Team led by Rob Jeffrey. Our Sacristan Mary Holloway-Neville and chalice assistants. University of the Creative Arts, Laine Theatre Arts staff and students. Those in Kiln Lane, Kingsdown Road, Laburnum Road, Ladbrook Road, Leighton Way and Leith Road.

Thursday 18th

Vocations to Ministry, ordained and lay. Churches Together in Epsom: Russell Holding (Chair). Our Missions: AMECA (for Malawi, Epsom based). Those in Langley Close, Langley Vale Road, Links Road and Lintons Lane.

Friday 19th

Our Home Communion Team and those to whom they take Communion. Our Flower-Arranging Team: Yvonne Parish. Staff at local Citizens' Advice Bureau, Age Concern and Job Centre. All those seeking their help and/or in need of work. Those in Longdown Lane South, Longdown Road, Lynwood Avenue, Lynwood Road, Mannamead, Mannamead Close, Middle Close and Middle Lane.

Saturday 20th

Our Deanery Synod: Howard Bluett, Alexander Rennie, John Padwick and Lynne Scholefield. Our Eco Church Team: Helen Williams. Our Missions: Mission to Kenya. Those in Milburn Walk, Mill Road, Millers Copse, Milton Gardens and Mospey Crescent.

MISSION FOCUS – JUNE



PHAB - Is a national and local organisation with a network of clubs and partners across the country where disabled and non-disabled people learn, thrive and belong.

PHAB provides safe fun places for people to feel independent, meet new friends and gain confidence together.

We support the Epsom PHAB group with donations.

Please hold them in your prayers. ***Jill Chapman, Mission***

THE POWER OF POETRY – JUNE

The poem selected for June is quite long, so biographical details must be quite short. Matthew Arnold was born in 1822 in Laleham, near Staines. His father was Thomas Arnold, Headmaster of Rugby School where Matthew Arnold was educated. He later went to Oxford and became a major poet and writer of poetry criticism.

Dover Beach:

*The sea is calm tonight,
The tide is full, the moon lies fair
Upon the Straits - on the French coast, the light
Gleams, and is gone; the cliffs of England stand,
Glimmering and vast, out in the tranquil bay.
Come to the window, sweet is the night air!
Only from the long line of spray
Where the ebb meets the moon-blanch'd sand,
Listen! You hear the grating roar
Of pebbles, which the waves suck back, and fling,
At their return, up the high strand,
Begin, and cease, and then again begin,
With tremulous cadence slow, and bring
The eternal note of sadness in.*

*Sophocles long ago
Heard it on the Aegaeon, and it brought
Into his mind the turbid ebb and flow
Of human misery; we
Find also in the sound a thought,
Hearing it by this distant northern sea.
The sea of faith
Was once, too, at the full, and round earth's shore
Lay like the folds of a bright girdle furl'd;
But now I only hear
Its melancholy, long, withdrawing roar,
Retreating to the breath
Of the night wind down the vast edges drear
And naked shingles of the world.*

*Ah, love, let us be true
To one another! for the world, which seems
To lie before us like a land of dreams,
So various, so beautiful, so new,
Hath really neither joy, nor love, nor light,
Not certitude, nor peace, nor help for pain;
And we are here as on a darkling plain
Swept with confused alarms of struggle and flight
Where ignorant armies clash by night.*

In *Dover Beach* Arnold is writing about loss of faith, which was a casualty of the Enlightenment, accelerated by advances in Geology which provided evidence that the earth was millions of years older than had been thought and had undergone masses of changes caused by volcanic action, ice ages followed by warming and so on. The publication of Charles Darwin's *On the Origin of Species* in 1859 also impacted on people's belief in the accuracy of the account of creation in Genesis.

It is a wonderful and evocative poem, however, written in free verse which at the time was experimental, though the sentiments are Victorian with a grieving sense of loss. It is written as a monologue and apparently the poet is speaking to someone else, probably his wife, though that person does not speak. The first verse begins lyrically, interrupted by the word "Only..." and going on to describe "the grating roar of pebbles". I expect we have all heard this at some time; I heard it quite recently when I was at Birling Gap in mid-May when the sea, at high tide, was grey and rough and the roar of the sea dragging over the shingle was powerful. Even when the sea looks tranquil it is never at rest. Arnold's lines echoes the sound of the sea crashing and then

withdrawing over the pebbly beach, using sibilance in many words: strand, cease, cadence, slow, sadness. The last part is full of regret for the loss of faith, and the last five lines are an apt description of our world at the moment. There is no room here for detailed analysis and criticism, but it is worth thinking about what we would reply to his conclusion.

Mary Gilbert

FOODBANK REQUESTS

Chocolate - **Urgent we have none**

Sponge Pudding - **Urgent we have none**

Tinned meat – **Urgent we have none**

Sugar - **Urgent we have none**

Milk UHT – **Urgent**, Instant Coffee – **Urgent**

Tinned Potatoes- **Urgent**

Custard – **Urgent**, Long Life Juice – **Urgent**

Tinned Carrots, Sweetcorn

Cooking Sauce, Tinned Tomatoes

Tinned Meat, Instant Mash, Pasta Sauce, Noodles

Tinned Fish, Microwave Rice, Pasta/Beans with Meat

Dried Pasta in Sauce, Tinned Fruit

Breakfast Cereal, Powdered Milk, Biscuits

Squash/Honey/Jam/Chocolate Spread/Peanut Butter/Marmalade

Ketchup/Mayonnaise/Brown Sauce

Male/ Female Deodorant, Shower Gel, Shampoo

Adult Toothpaste and Toothbrushes

Washing Powder, Toilet Rolls

Shaving Foam, Hair Conditioner

Washing Up Liquid

Nappies Size 5, 5+, 6 and 6+

Parish Office:

**The parish office is open from 9.30am – 12.30pm every
Monday, Wednesday and Friday.**

Church House, Church Street, Epsom,

KT17 4PX Phone: 01372 722567

E-mail: office@stmartinsepsom.org

Website: www.stmartinsepsom.org

Submitting an item for the newsletter

Please ensure that all items are emailed to the office marked
'For Newsletter' in the title by 12 noon on Wednesday,
to be included for that week.

The Souls of the HORTON 9000 and the EPSOM CLUSTER are calling for their stories to be told ... *will we listen?*

Join us for a powerful evening of history and human connection as two eminent experts bring together archives, photography, and contemporary art, giving voice to thousands of souls from Surrey's hidden psychiatric hospitals in a fundraiser for the Grange Centre, Bookham.



**This is
more than
a talk.**

**It's an encounter
with lives once
overlooked —
and a chance
to see them anew.**

the
Grange
at Bookham

Julian Pooley (Surrey History Centre) explores the internationally significant archives of Surrey's psychiatric hospitals through personal case notes and rare photographic portraits

- Why did Surrey become home to so many of these institutions?
- How were their records rescued when the hospitals closed?
- How do these stories shape our understanding today?

Julian's work underpins the **Us & Them Project** —created with The Freewheelers Theatre Company, Leatherhead, pairing contemporary participants with historic patients. Photographer **Emma Brown's** striking portraits echo the historic wet plate collodion originals of the 1850s.

Professor Alana Harris (King's College London) presents **Synthetic Weaves**—a collaboration with artist **Dr Eric Fong**, dressmaker **Valerie Moon**, and members of **The Grange Centre**. The molecular structures of modern pharmaceuticals and the lace collars made and worn by women in the asylums have inspired reinterpretations by clients at the Grange Centre to make artwork which restores identity, dignity and voice to the forgotten.



All proceeds support the vital work of the Grange Centre, empowering adults with learning disabilities to lead independent and fulfilling lives.



**Thursday
June 25th:**
7:00pm for 7:30pm



Ashted Peace
Memorial Hall,
Woodfield Lane,
Ashted, Surrey
KT21 2BE



Tickets available
via Eventbrite

<https://www.eventbrite.co.uk/e/souls-of-the-horton-9000-epsom-hospitals-hidden-lives-revealed-tickets-1988399933728?aff=oddtcreator>



**SCAN TO
BOOK YOUR
TICKET**



Registered Charity No: 207740

LUMOS

A Hans Zimmer candlelight experience

an unforgettable evening of music in an enchanting
indoor setting

St Martin's Church, Church St,
Epsom KT17 4PX
Saturday 18th July
2 Sittings: 7-8pm | 9-10pm




Book tickets now!
www.lumos-experiences.com

Saint
Columba's
House



OPEN DAY AT ST COLUMBA'S



Tours

A WARM WELCOME AWAITS!


Join us this summer for a special Open Day at St Columba's House, one of Woking's most peaceful and welcoming spaces. Feel free to drop in and say 'hi'.



Activities

THINGS TO DO:

- ✔ explore the house and gardens
- ✔ complimentary refreshments
- ✔ take a guided tour of the building
- ✔ walk the garden labyrinth
- ✔ visit the art exhibition
- ✔ spend a quiet moment in our Oratory



Coffee

WHEN?

SATURDAY 1ST AUGUST
11AM - 3PM

CONTACT US NOW

- ☎ 01483 766498
- ✉ admin@stcolumbashouse.org.uk
- 🌐 www.stcolumbashouse.org.uk
- 🏠 Maybury Hill, Woking, Surrey GU22 8AB



St Columba's House is wholly owned by St Peter's Charity, a registered charity in England and Wales number 1177879 and a company limited by guarantee registered in England number 11142467